



Key features

- Zero impact on users & e-mail servers - even in 24 x 7 environments.
- Automatically re-writes addresses to ensure e-mails 'reply-able' post-migration.
- Avoids the need to transfer legacy data to the new mail server.
- Migrates e-mails and attachments (including encrypted e-mails), calendars & address books.
- Supports local archives, shared folders and Notes journals.
- Highly selective migration (e.g. based on age, sender, subject, size, classification, content etc) plus automated decryption & address book migration removes the need for user involvement.
- Reduces long term storage costs by removing duplicate items & providing total information lifecycle management.
- Eliminates the overheads & costs of maintaining separate data repositories.
- Ensures ability to respond efficiently to future discovery requests & meet evolving compliance & regulatory needs.
- Allows simultaneous administration & access to both the old Notes data AND the new Exchange data.
- Designed to leverage Microsoft & 3rd-party migration tools.
- Fully supports Exchange 2007.

IBM Lotus Notes to Microsoft Exchange Migration

The TransVault™ Notes Migration Suite is designed for organizations wishing to reduce the costs, time and risks involved in migrating their Lotus Notes data (e-mails, calendars, address books, journals etc) to Microsoft Exchange.

Unlike mailbox migration solutions that operate in the 'foreground', TransVault moves data in an unobtrusive, 'behind the scenes' way, that does not inconvenience end users or burden new servers with legacy e-mails. Meanwhile all migrated data, calendars, contacts etc, are seamlessly accessible from Outlook or OWA.

TransVault offers superior conversion performance and fidelity, as well as the ability to decrypt, ensuring that e-mails are fully functional and discoverable in the new environment. Where necessary, TransVault also re-writes internal e-mail addresses so that legacy e-mails can be successfully replied to within the new mail system or new domain.

Whether migrating as a result of a merger, acquisition or business decision, TransVault eases your transition, giving staff instant access to the information they need, whilst ensuring corporate data is fully secured, audited and searchable to meet corporate governance and compliance requirements.

Available separately or as total solution package, the TransVault Notes Migration Suite includes:

- **TransVault™ Notes Migrator** - e-mail and calendar migration
- **TransVault™ Decrypter** - encryption status reporting & decryption
- **TransVault™ PAB Migrator** - address book & contacts migration

“Using TransVault we were able to migrate data as a totally transparent background process, with no time pressures on the IT department and no adverse impact on end users”



The largest, most risky part of a Lotus Notes to Microsoft Exchange migration is moving data across.

Conventional 'foreground' solutions require that user's mailboxes are closed down during this process, which means users have to be migrated in small batches 'out of hours' to avoid any disruption.

Experts also recommend Notes servers are 'cleaned up' first in order to reduce the amount of data to be moved.

Introducing TransVault - a better way to move.

By leveraging leading e-mail archive solution ZANTAZ EAS, TransVault is able to migrate the bulk of your Notes data in record time and with absolutely no e-mail service downtime.

The EAS for Notes archive service seamlessly captures all or selected items from Notes, which are subsequently converted into Exchange format and made fully accessible for discovery or user productivity via powerful searching or shortcuts in Outlook folders. The few remaining new e-mails not migrated using this method can be quickly moved to live Exchange servers using Microsoft tools or other 3rd-party solutions just prior to 'going live'.

Reducing the Cost of your Migration

This low impact 'archive first' approach shrinks your overtime and consultancy bills by allowing the majority of your migration to be completed during normal working hours and by your own IT team.

Larger sites also benefit from not having to perform costly consolidations prior to migration, instead using EAS to collect and centralize data from multiple distributed Notes servers with minimal network overhead.

Advanced E-mail Conversion

High conversion fidelity combined with very fast throughput ensures nothing is lost in translation and reduces migration times.

TransVault also re-writes e-mail addresses to reflect changes in domains or conventions (e.g. following an acquisition), ensuring e-mails can be successfully replied to 'post-migration'.

All access rights and folder structures established in Notes are also automatically reflected in the new Exchange environment.

Reduced Storage Costs

EAS consistently achieves 70-80% savings by optimizing and removing duplicate e-mails. And because shortcuts are just a few KB, your new Exchange servers are not instantly 'filled up' with legacy data.

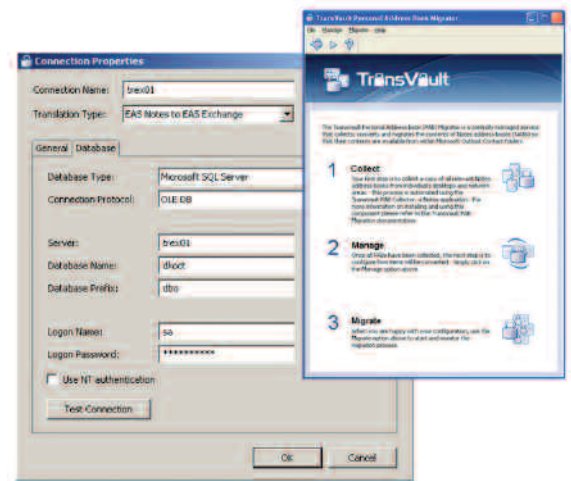
After the migration is complete, organizations benefit from ongoing e-mail storage management, keeping Exchange mailboxes within acceptable operational limits and quick to restore in the event of a disaster.

A Total Migration Solution

In addition to migrating e-mails, calendars etc, separately available TransVault applications are on hand to complete your migration:

Encrypted items: The TransVault Decryptor reports on and automatically decrypts any encrypted items prior to migration, with nothing to install on the desktop and just an authorization click from users.

Contacts: Local Notes address books can be converted into Outlook contacts using the TransVault Personal Address Book (PAB) Migrator, which again requires no desktop installation and minimal user interaction.



Enhanced Compliance

EAS provides a secure, tamper-proof and central repository for Notes and Exchange data (including journals), whilst TransVault ensures data is kept in a future-proof and reliable format. Organizations can therefore decommission their Notes servers safe in the knowledge that they can maintain complete, access to legacy e-mails 'in one place'.

The complete lifecycle of archived data can be fully managed using EAS' highly granular retention and purging policies, which include the option to review policies post-migration. This capability helps avoid project delays due to uncertainty over what Notes data to migrate.

ZANTAZ' advanced e-discovery and litigation support solutions can also be used to meet both internal and external compliance and information requests relating to both legacy Notes and current Exchange data.

TransVault addresses the key challenges associated with data migration:

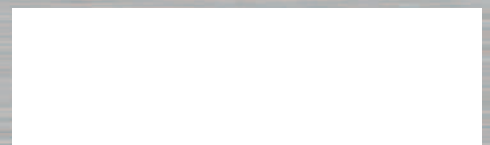
Challenge	The TransVault Solution
User impact	<ul style="list-style-type: none"> users keep working as their data is migrated just a few confirmation clicks required for decryption & address migration no user interaction needed to migrate local NSF files
IT staff overheads	<ul style="list-style-type: none"> no desktop rollout for address book, decryption or local NSF migration eliminates stress of migrating entire mailboxes 'overnight'
Data fidelity	<ul style="list-style-type: none"> proven superior e-mail conversion, including embedded items & complex HTML preserves the contents of mailboxes, personal archives, shared mailboxes & journals
Migration Time	<ul style="list-style-type: none"> bulk data migrations can be carried out non-stop at any time multi-threaded architecture supports extremely fast processing rates conversion rates up to 10x faster than other solutions
Project Costs	<ul style="list-style-type: none"> no need to consolidate Notes servers prior to migration shrinks your bill for additional consultancy services & overtime no need to purchase solutions from multiple different suppliers
Storage Costs	<ul style="list-style-type: none"> avoids overloading new Exchange servers with GBs or TBs of legacy Notes data reduces your e-mail storage overhead by up to 70-80%
Compliance	<ul style="list-style-type: none"> high-quality conversion preserves the integrity of historic data migrated items are held in secure, tamper-proof storage with full audit trail decrypts items to ensure content is discoverable ensures all items are quickly & reliably searchable in one location creates a consolidated snapshot of Notes data as backup solution provided by industry-leaders in information risk management.

essential ©

With over 17 years experience in providing quality infrastructure and messaging solutions, Essential is behind some of the largest and most successful e-mail archiving projects in the world.

TransVault products & services bring you the benefit of a wealth of experience & expertise from a partner you can trust.

For more details & supported platforms contact Essential or your nearest authorized reseller.



Visit: www.transvault.com
E-mail: info@transvault.com
Call: +44 (0)1275 343199